



You are receiving this flyer because you are within the Hayward GHAD.

## What is a GHAD?

A GHAD is a public agency that allows property owners to group together and mitigate geologic hazards.

**It works to protect you and your property.**

## Your Hayward GHAD

- Formed in 2016
- Financed through supplemental homeowner property tax assessments
- Managed by ENGEIO Incorporated

For more info, visit:

[www.haywardghad.org](http://www.haywardghad.org)

## GHAD Duties

- Prevention, mitigation, abatement, and control of geologic hazards
- Monitoring and maintenance of storm drain systems, detention basins, and slopes
- Emergency response for significant earth movement events

## Your GHAD Board of Directors (BOD)

The Hayward GHAD BOD comprises members of the Hayward City Council, who are:

- Barbara Halliday, Chair -  
[Barbara.Halliday@hayward-ca.gov](mailto:Barbara.Halliday@hayward-ca.gov)
- Francisco Zermeño -  
[Francisco.Zermeno@hayward-ca.gov](mailto:Francisco.Zermeno@hayward-ca.gov)
- Angela Andrews -  
[Angela.Andrews@hayward-ca.gov](mailto:Angela.Andrews@hayward-ca.gov)
- Sara Lamnin - [Sara.Lamnin@hayward-ca.gov](mailto:Sara.Lamnin@hayward-ca.gov)
- Elisa Márquez - [Elisa.Marquez@hayward-ca.gov](mailto:Elisa.Marquez@hayward-ca.gov)
- Mark Salinas - [Mark.Salinas@hayward-ca.gov](mailto:Mark.Salinas@hayward-ca.gov)
- Aisha Wahab - [Aisha.Wahab@hayward-ca.gov](mailto:Aisha.Wahab@hayward-ca.gov)

## ENGEIO Incorporated Hayward GHAD

2010 Crow Canyon Pl, Suite 250  
San Ramon, CA 94583  
Office (925) 866-9000

### Manager

#### Eric Harrell

Direct: (925) 786-5579, Email: [eharrell@engeio.com](mailto:eharrell@engeio.com)

#### Haley Ralston

Direct: (909) 373-5457, Email: [hralston@engeio.com](mailto:hralston@engeio.com)

**ENGEO Incorporated - Hayward GHAD**

2010 Crow Canyon Pl, Suite 250  
 San Ramon, CA 94583  
 Office (925) 866-9000

**Manager**

**Eric Harrell**

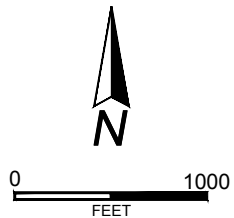
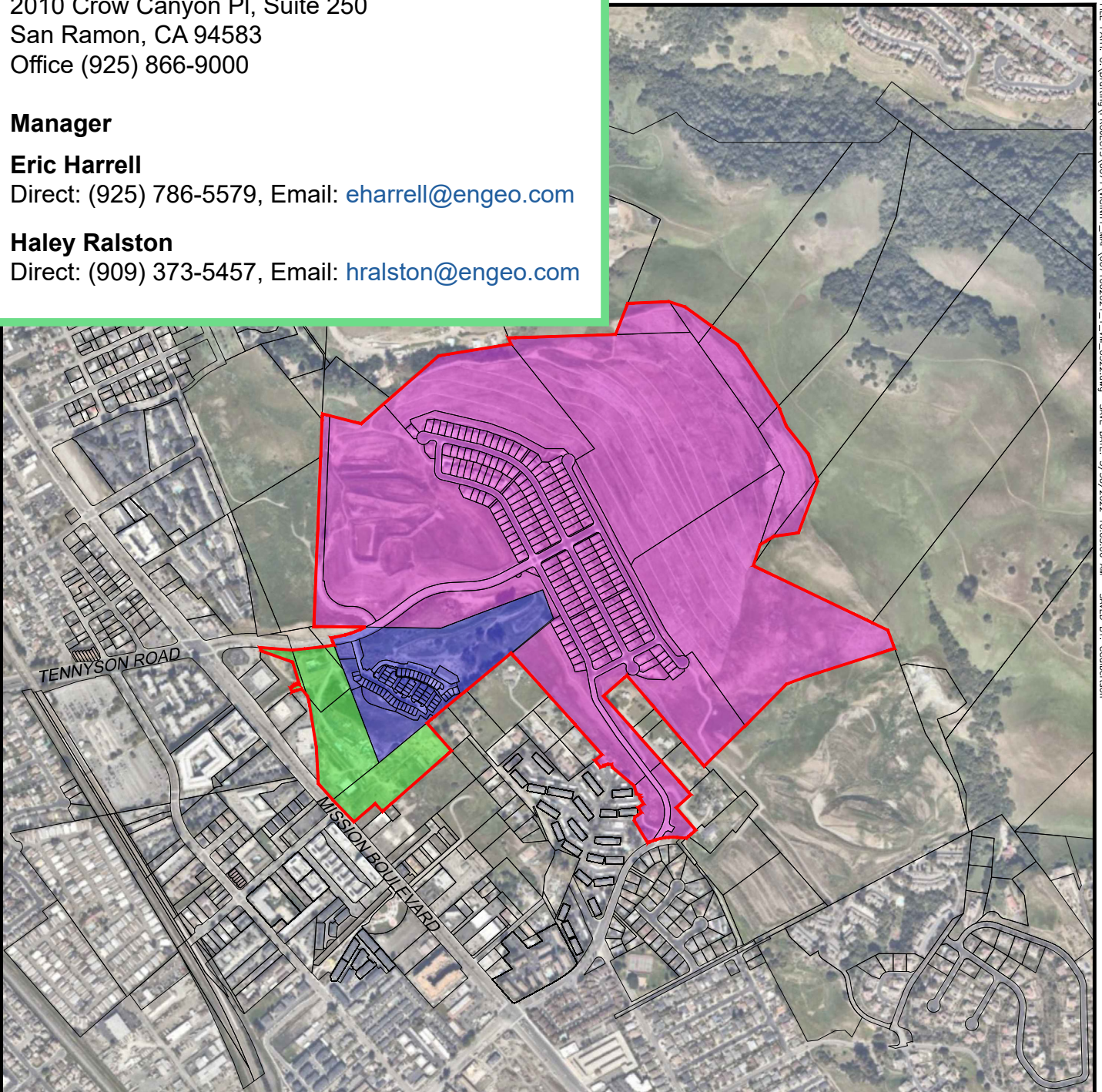
Direct: (925) 786-5579, Email: [eharrell@engeo.com](mailto:eharrell@engeo.com)

**Haley Ralston**

Direct: (909) 373-5457, Email: [hralston@engeo.com](mailto:hralston@engeo.com)

COPYRIGHT © 2022 BY ENGEO INCORPORATED. THIS DOCUMENT MAY NOT BE REPRODUCED IN WHOLE OR IN PART BY ANY MEANS WHATSOEVER, NOR MAY IT BE QUOTED OR EXCERPTED WITHOUT THE

FILE PATH: G:\Drafting\PROJECTS\6671\VICINITY\_MAP\6671002021\_1\_WM\_0322.dwg SAVE DATE: 3/30/2022 10:03:06 AM SAVED BY: Colubertson



**EXPLANATION**

ALL LOCATIONS ARE APPROXIMATE

- HAYWARD GEOLOGIC HAZARD ABATEMENT DISTRICT BOUNDARY
- HAYWARD SoMi DEVELOPMENT
- HIDEAWAY DEVELOPMENT
- THE RESERVE DEVELOPMENT

BASE MAP SOURCE: NEARMAP MAPPING SERVICE



VICINITY MAP  
 HAYWARD GHAD  
 HAYWARD, CALIFORNIA

PROJECT NO.: 6671.002.021

SCALE: AS SHOWN

DRAWN BY: CC

CHECKED BY: EH

FIGURE NO.

**1**

ORIGINAL FIGURE PRINTED IN COLOR